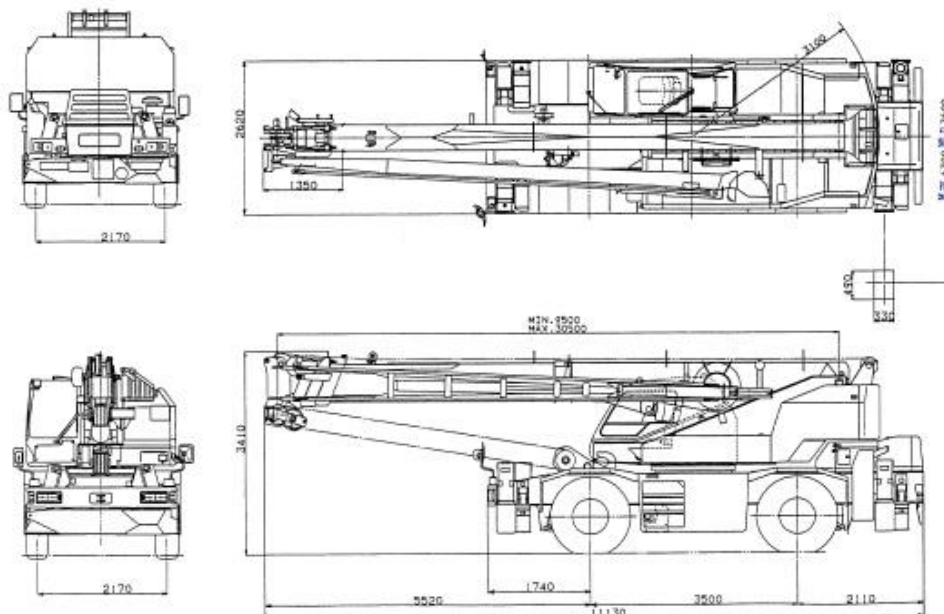


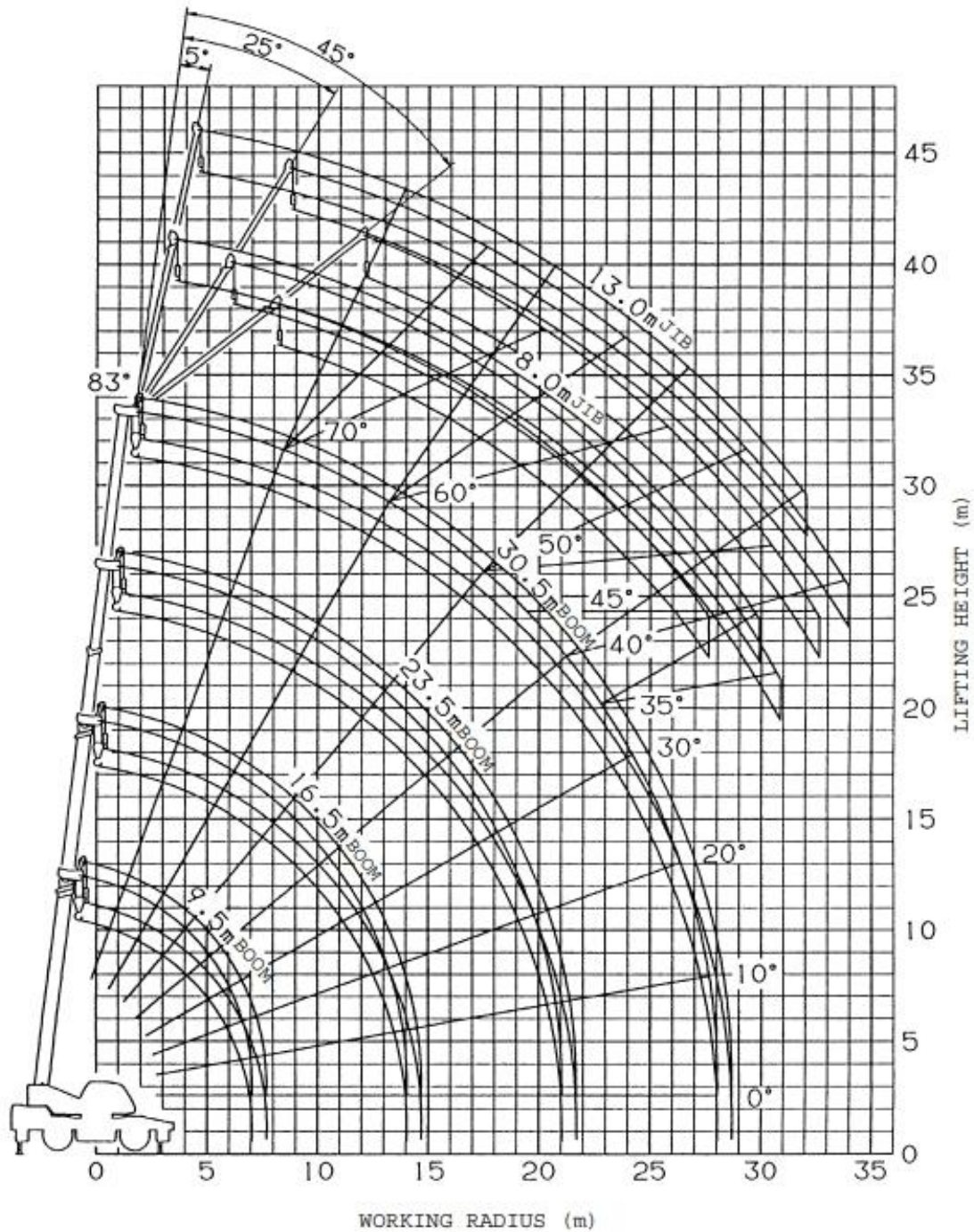
TADANO TR-250M

CRANE SPECIFICATIONS		
Max. Lifting Capacity	25 ton (25,000 kg.)	Working Radius 3.5 m.
Boom	Boom Section	4 Sections
	Length	9.5 / 16.5 / 23.5 / 30.5 m.
	Jib	8.0 / 13.0 m.
Dimensions	Length	11.13 m.
	Width	2.62 m.
	Height	3.41 m.
Wire Rope	Main Winch	16mm. x 170m. (Diameter x Length)
		Spin-resistant wire rope
	Auxiliary Winch	16mm. x 98m. (Diameter x Length)
		Spin-resistant wire rope
Outriggers	3 Stages	Fully extended width 6.3m.
		Middle extended width 5.9m. , 5.0m.
		Minimum extended width 3.6m.
Weights	Total	26,495 kg.
	Front	13,250 kg.
	Rear	13,245 kg.

DIMENSIONS (1/100)



WORKING RADIUS – LIFTING HEIGHT



TOTAL RATED LOADS

With outriggers set

(BOOM)

Unit: ton					Unit: ton				
Outriggers fully extended (6.3m) –360°–					Outriggers middle extended (5.9m) –Over sides–				
A \ B	9.5m	16.5m	23.5m	30.5m	A \ B	9.5m	16.5m	23.5m	30.5m
2.5m	25.0	19.0	12.5		2.5m	25.0	19.0	12.5	
3.0m	25.0	19.0	12.5		3.0m	25.0	19.0	12.5	
3.5m	25.0	19.0	12.5	7.0	3.5m	25.0	19.0	12.5	7.0
4.0m	23.0	19.0	12.5	7.0	4.0m	23.0	19.0	12.5	7.0
4.5m	21.2	18.0	12.5	7.0	4.5m	21.2	18.0	12.5	7.0
5.0m	19.4	16.7	12.5	7.0	5.0m	19.4	16.7	12.5	7.0
5.5m	17.8	15.6	11.75	7.0	5.5m	17.8	15.6	11.75	7.0
6.0m	16.3	14.6	11.1	7.0	6.0m	16.3	14.6	11.1	7.0
6.5m	15.1	13.8	10.5	7.0	6.5m	15.1	13.8	10.5	7.0
7.0m	13.7	13.0	10.0	7.0	7.0m	13.0	12.6	10.0	7.0
8.0m		10.55	9.0	7.0	8.0m		9.7	9.0	7.0
9.0m		8.5	8.2	6.3	9.0m		7.7	8.2	6.3
10.0m		7.05	7.3	5.8	10.0m		6.3	7.0	5.8
11.0m		5.85	6.4	5.3	11.0m		5.2	6.0	5.3
12.0m		4.95	5.5	4.9	12.0m		4.35	5.1	4.9
13.0m		4.2	4.75	4.5	13.0m		3.7	4.35	4.5
14.0m		3.6	4.1	4.15	14.0m		3.15	3.8	4.05
15.0m			3.6	3.8	15.0m			3.3	3.6
16.0m			3.15	3.45	16.0m			2.85	3.15
17.0m			2.8	3.05	17.0m			2.5	2.75
18.0m			2.45	2.7	18.0m			2.2	2.45
19.0m			2.15	2.45	19.0m			1.95	2.2
20.0m			1.9	2.2	20.0m			1.7	1.95
21.0m			1.7	1.95	21.0m			1.5	1.75
22.0m				1.75	22.0m				1.55
24.0m				1.4	24.0m				1.2
26.0m				1.15	26.0m				0.95
28.0m				0.95	27.9m				0.75
a (°)	0 ~ 83				a (°)	0 ~ 83			

A = Boom length

B = Working radius

a = Boom angle range (for the unladen condition)

(JIB)

Unit: ton

Outriggers fully extended (6.3m) -360°-												
C D E (°)	30.5m Boom + 8.0m Jib						30.5m Boom + 13.0m Jib					
	5°		25°		45°		5°		25°		45°	
	B (m)	M	B (m)	M	B (m)	M	B (m)	M	B (m)	M	B (m)	M
83	4.4	3.0	7.1	2.1	9.0	1.6	5.8	2.0	10.0	1.2	13.4	0.8
76	9.4	3.0	12.0	2.1	13.6	1.6	11.7	2.0	15.5	1.2	18.3	0.8
72	12.2	3.0	14.7	2.1	16.0	1.6	14.8	1.75	18.4	1.1	20.9	0.8
70	13.5	2.8	15.9	2.1	17.3	1.6	16.2	1.65	19.8	1.05	22.2	0.8
65	16.5	2.35	18.8	1.8	20.0	1.5	19.8	1.4	23.1	0.95	25.1	0.78
60	19.4	2.0	21.6	1.55	22.5	1.35	23.1	1.2	26.1	0.9	27.8	0.75
55	22.1	1.45	24.1	1.35	24.8	1.2	26.2	1.05	29.0	0.85	30.3	0.74
50	24.6	1.05	26.4	1.0	26.9	0.95	29.0	0.85	31.4	0.75	32.4	0.7
45	26.9	0.75	28.4	0.7	28.7	0.7	31.5	0.6	33.5	0.55	34.1	0.55
40	29.1	0.55	30.2	0.5			33.6	0.4	35.0	0.4		
35	31.0	0.38	31.8	0.35								
a (°)	34 ~ 83			44 ~ 83			39 ~ 83			44 ~ 83		

Unit: ton

Outriggers middle extended (5.9m) -Over sides-												
C D E (°)	30.5m Boom + 8.0m Jib						30.5m Boom + 13.0m Jib					
	5°		25°		45°		5°		25°		45°	
	B (m)	M	B (m)	M	B (m)	M	B (m)	M	B (m)	M	B (m)	M
83	4.4	3.0	7.1	2.1	9.0	1.6	5.8	2.0	10.0	1.2	13.4	0.8
76	9.4	3.0	12.0	2.1	13.6	1.6	11.7	2.0	15.5	1.2	18.3	0.8
72	12.2	3.0	14.7	2.1	16.0	1.6	14.8	1.75	18.4	1.1	20.9	0.8
70	13.5	2.8	15.9	2.1	17.3	1.6	16.2	1.65	19.8	1.05	22.2	0.8
65	16.5	2.35	18.8	1.8	20.0	1.5	19.8	1.4	23.1	0.95	25.1	0.78
60	19.3	1.85	21.6	1.55	22.5	1.35	23.1	1.2	26.1	0.9	27.8	0.75
55	22.0	1.3	24.1	1.15	24.8	1.1	26.2	1.05	29.0	0.85	30.3	0.74
50	24.4	0.9	26.3	0.85	26.9	0.8	28.9	0.7	31.3	0.6	32.3	0.6
45	26.7	0.6	28.3	0.55	28.7	0.55	31.4	0.5	33.4	0.4	34.0	0.4
40	28.8	0.4	30.1	0.35			33.6	0.3				
a (°)	39 ~ 83			44 ~ 83			39 ~ 83			44 ~ 83		

B = Working radius C = Jib length

D = Jib offset E = Boom angle

M = Total rated loads

a = Boom angle range (for the unladen condition)

(JIB)

Unit: ton

Outriggers middle extended (5.0m) –Over sides–												
C	30.5m Boom + 8.0m Jib						30.5m Boom + 13.0m Jib					
	5°		25°		45°		5°		25°		45°	
D	B (m)	M	B (m)	M	B (m)	M	B (m)	M	B (m)	M	B (m)	M
E (°)												
83	4.4	3.0	7.1	2.1	9.0	1.6	5.8	2.0	10.0	1.2	13.4	0.8
76	9.4	3.0	12.0	2.1	13.6	1.6	11.7	2.0	15.5	1.2	18.3	0.8
72	12.2	3.0	14.7	2.1	16.0	1.6	14.8	1.75	18.4	1.1	20.9	0.8
70	13.5	2.8	15.9	2.1	17.3	1.6	16.2	1.65	19.8	1.05	22.2	0.8
65	16.3	2.0	18.8	1.8	20.0	1.5	19.8	1.4	23.1	0.95	25.1	0.78
60	19.1	1.3	21.4	1.15	22.5	1.1	23.0	1.0	26.1	0.9	27.8	0.75
55	21.8	0.8	23.9	0.75	24.7	0.75	25.9	0.65	28.8	0.6	30.1	0.5
50	24.3	0.5	26.1	0.45	26.7	0.45	28.7	0.4	31.2	0.35	32.1	0.3
a (°)	49 ~ 83						49 ~ 83					

Unit: ton

Outriggers minimum extended (3.6m) –Over sides–												
C	30.5m Boom + 8.0m Jib						30.5m Boom + 13.0m Jib					
	5°		25°		45°		5°		25°		45°	
D	B (m)	M	B (m)	M	B (m)	M	B (m)	M	B (m)	M	B (m)	M
E (°)												
83	4.4	3.0	7.1	2.1	9.0	1.6	5.8	2.0	10.0	1.2	13.4	0.8
76	9.4	3.0	12.0	2.1	13.6	1.6	11.7	2.0	15.5	1.2	18.3	0.8
72	11.9	2.2	14.5	1.8	16.0	1.6	14.8	1.75	18.4	1.1	20.9	0.8
70	13.1	1.8	15.7	1.5	17.2	1.35	16.1	1.4	19.8	1.05	22.2	0.8
65	16.0	1.0	18.5	0.9	19.8	0.8	19.4	0.8	22.9	0.65	25.0	0.55
60	18.9	0.5	21.1	0.45	22.2	0.4	22.6	0.4	25.8	0.35	27.5	0.3
a (°)	59 ~ 83						59 ~ 83					

B = Working radius C = Jib length

D = Jib offset E = Boom angle

M = Total rated loads

a = Boom angle range (for the unladen condition)